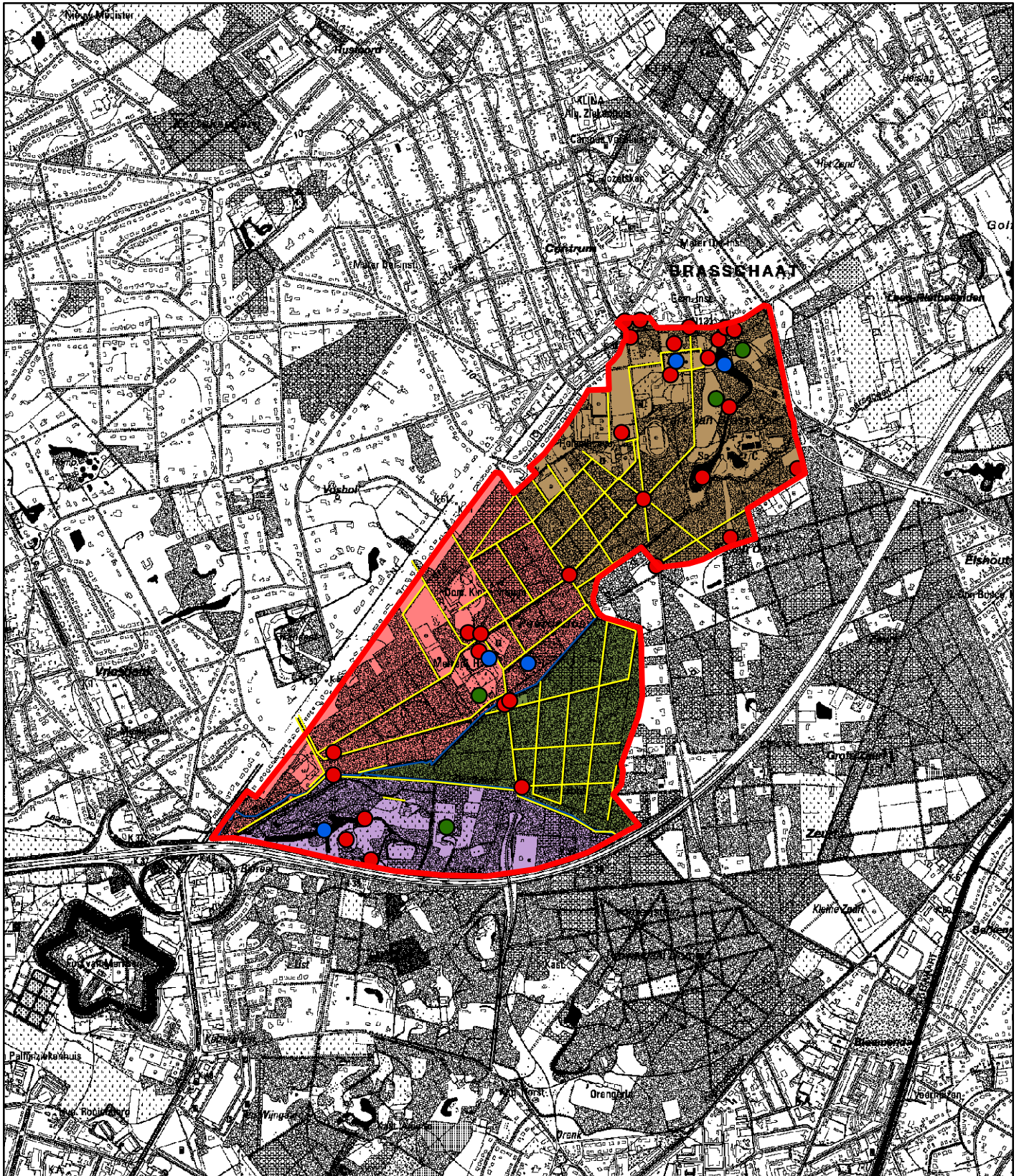





# Kaart 1: Ruimtelijke visie Ankerplaats "Peerdsbos en Kasteel van Brasschaat"






## Legende

 Ankerplaats



## Punten

-  Bouwkundig Erfgoed
-  Houtig Erfgoed
-  Hydrografisch element

## Deelgebieden

-  Park en omgeving Hof ter List
-  Compartimentenlandschap Melkerij
-  Peerdsbos
-  Park en Kasteel van Brasschaat

## Lijnen

-  Dreven
-  Waterlopen

0 500 1.000 2.000 Meter

